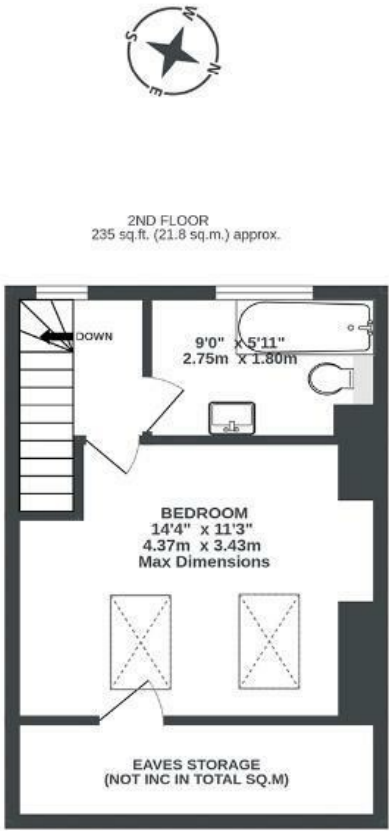
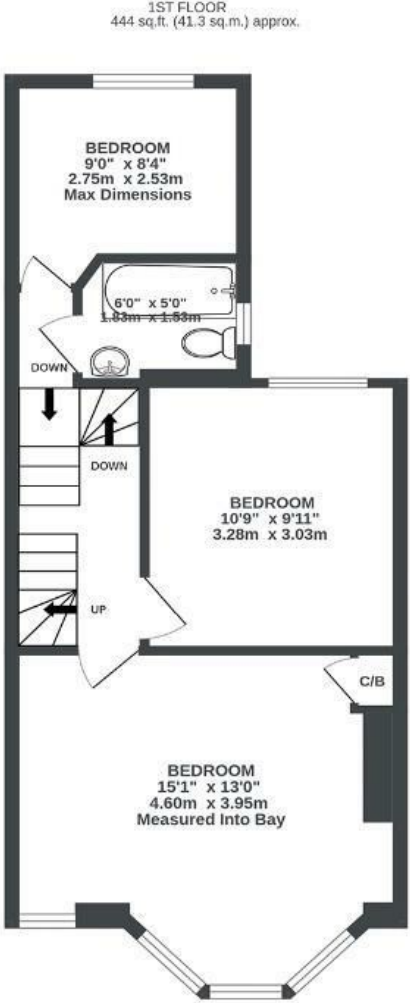
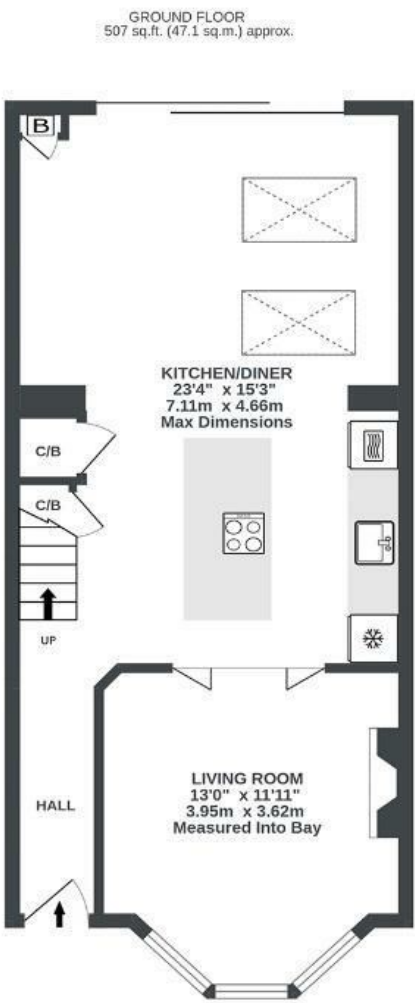


Camelford Road

GREENBANK

APPROXIMATE FLOOR AREA
110.2 SQM / 1186 SQFT



Illustrations are for reference purposes only, measurements are approximate, not to scale.

Boardwalk

Camelford Road

GREENBANK, BRISTOL

£

£535,000



BS5 6HW

zzz

4 Bedrooms



2 Bathrooms

"We love the open plan downstairs, it has been great for hosting parties, BBQs and brunches, with everyone gathered around the island. Now, with two small children, I can have eyes on them playing whether I am cooking dinner or pottering in the garden. We can also close off the front room on an evening and get cosy in front of the fire. Being able to see the garden as soon as you walk through the front door is also really lovely. And in summer we have the doors to the garden open all day."

